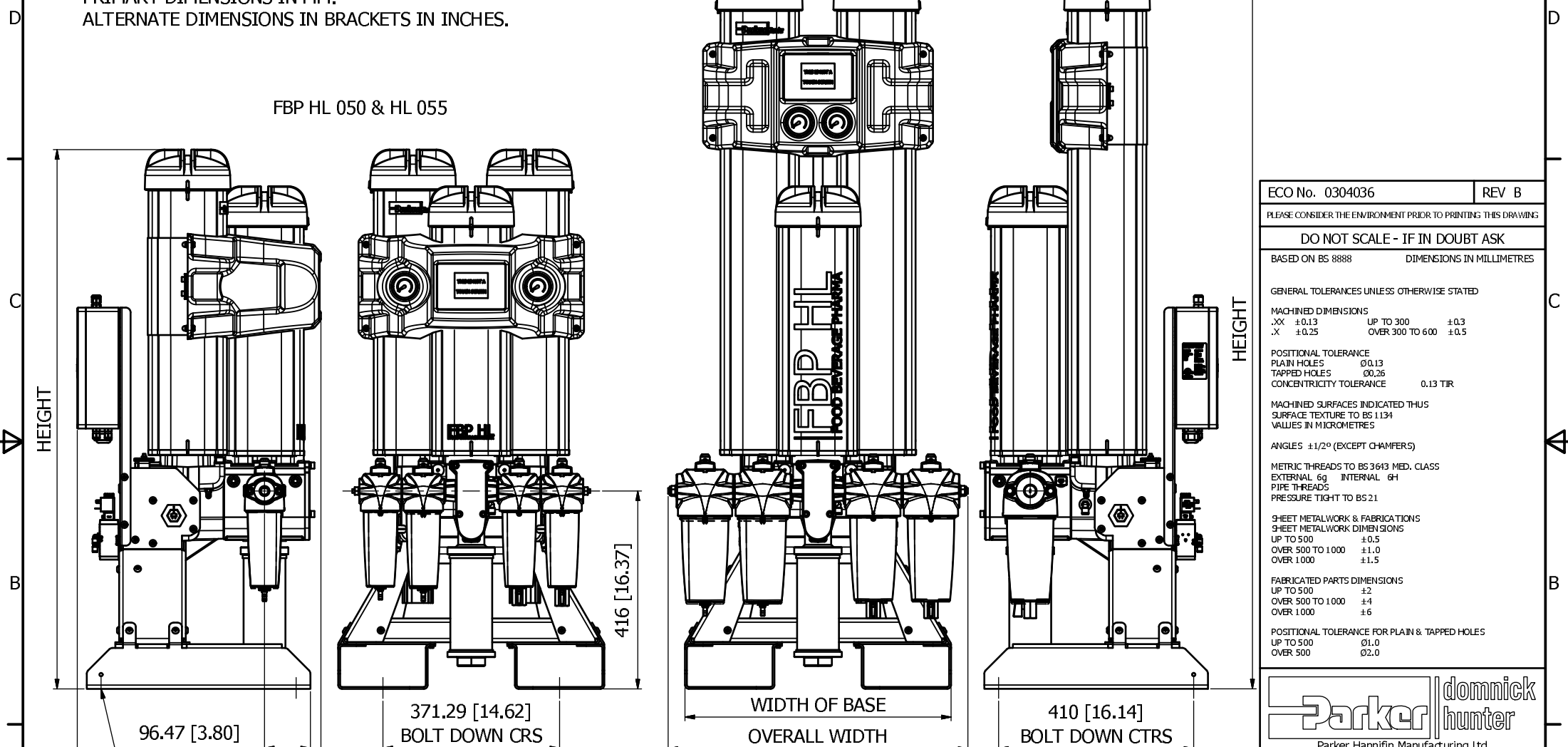


NOTE

 PRIMARY DIMENSIONS IN MM.
 ALTERNATE DIMENSIONS IN BRACKETS IN INCHES.

FBP HL 060, HL 065 & HL 070

FBP HL 050 & HL 055



ECO No. 0304036	REV B
PLEASE CONSIDER THE ENVIRONMENT PRIOR TO PRINTING THIS DRAWING	
DO NOT SCALE - IF IN DOUBT ASK	
BASED ON BS 8888	DIMENSIONS IN MILLIMETRES
GENERAL TOLERANCES UNLESS OTHERWISE STATED	
MACHINED DIMENSIONS	
.XX ±0.13	UP TO 300 ±0.3
.X ±0.25	OVER 300 TO 600 ±0.5
POSITIONAL TOLERANCE	
PLAIN HOLES	Ø0.13
TAPPED HOLES	Ø0.26
CONCENTRICITY TOLERANCE	0.13 TIR
MACHINED SURFACES INDICATED THUS	
SURFACE TEXTURE TO BS 1134	
VALUES IN MICROMETRES	
ANGLES ±1/2° (EXCEPT CHAMFERS)	
METRIC THREADS TO BS 3643 MED. CLASS	
EXTERNAL 6g	INTERNAL 6H
PIPE THREADS	
PRESSURE TIGHT TO BS21	
SHEET METALWORK & FABRICATIONS	
SHEET METALWORK DIMENSIONS	
UP TO 500	±0.5
OVER 500 TO 1000	±1.0
OVER 1000	±1.5
FABRICATED PARTS DIMENSIONS	
UP TO 500	±2
OVER 500 TO 1000	±4
OVER 1000	±6
POSITIONAL TOLERANCE FOR PLAIN & TAPPED HOLES	
UP TO 500	Ø1.0
OVER 500	Ø2.0

	PIPE SIZE	HEIGHT		WIDTH OF BASE		OVERALL WIDTH		DEPTH		WEIGHT	
MODEL	SPP OR NP	mm	Inch	mm	Inch	mm	Inch	mm	Inch	kg	lbs
FBP HL 050	1/2"	1133	45	559	22	500	19.7	512	20.2	91	201
FBP HL 055	1/2"	1313	52	559	22	500	19.7	512	20.2	98	216
FBP HL 060	1/2"	1510	59	559	22	500	19.7	496	19.5	108	238
FBP HL 065	1/2"	1560	65	559	22	500	19.7	496	19.5	114	251
FBP HL 070	3/4"	2020	80	559	22	630	24.8	496	19.5	136	300

HOLES TO SUIT
 M12 / 1/2" BOLTS

MATERIAL	SCALE		DRAWN	CHECKED	APPROVED	TITLE	
GEN. ARRT.	1:8		NAME	EJ	KW		DIMENSIONAL DRG FBP
			DATE	22/09/2017	26/09/2017		26/09/2017

Parker | **domnick hunter**
 Parker Hannifin Manufacturing Ltd
 domnick hunter Filtration & Separation Division
 Dukesway, Team Valley
 Gateshead, Tyne & Wear
 England, NE11 0PZ
 TEL +44 (0)191 402 9000
 FAX +44 (0)191 482 6296
 www.parker.com/dhns

THIS DOCUMENT IS COPYRIGHT AND IS THE PROPERTY OF
 PARKER HANNIFIN LTD. IT MUST NOT BE COPIED IN
 WHOLE OR PART, USED FOR MANUFACTURE OF, OR
 OTHERWISE DISCLOSED WITHOUT PRIOR
 WRITTEN CONSENT OF THE COMPANY

© 2016 **A3**

DRG No.	SHEET
101-10515	1 / 1